



 **HEDSAM X**

The new-generation  
access control system

# **Hedsam X**

## **Configuration manual for TA X - terminal**



Oy Hedengren Security Ab | Lauttasaarentie 50 | 00200 Helsinki  
[www.hedengrensecurity.fi](http://www.hedengrensecurity.fi)

TA-X-HEDSAM-X-INSTALLATION-EN

Contents

**Terminal IP address .....2**

**HConfig and HConfigDB .....4**

**TAXConnect.ini .....5**

**TAXConnect and TAXConnectServ .....6**

## Terminal IP address:



The default IP address of the terminal is 192.168.0.101. Terminal IP address can be changed from the terminal web interface.

1. Go to terminal default IP address with a browser (Chrome or Firefox recommended)
2. <http://192.168.0.101/cgi-bin/tasetup> The computer used for this must be in same IP range as Terminal. For an example 192.168.0.10
3. Set the terminal IP settings:

**TA 2.0 Touch Terminal Settings**

### COMMUNICATION SETTINGS

Terminal Address	<input type="text" value="192.168.0.101"/>
Network Mask	<input type="text" value="255.255.255.0"/>
Port	<input type="text" value="50000"/>
Broadcast Address	<input type="text" value="255.255.255.255"/>
Server	<input type="text" value="192.168.0.10"/>
Gateway	<input type="text" value="192.168.0.1"/>

### MISCELLANEOUS SETTINGS

System Id	<input type="text" value="1001"/>
Terminal Id	<input type="text" value="1.1"/>
Terminal Type	<input checked="" type="radio"/> attendance <input type="radio"/> meal

### Communication settings

<b>Terminal Address</b>	IP address of the terminal
<b>Network Mask</b>	Network mask, default 24bit

<b>Port</b>	UDP port used for communication from Hedsam X or Novitas Server (TAXConnect or TAXConnectServ).  Terminal will open the communication to the server.
<b>Broadcast Address</b>	Used for communication between TA X Terminals.
<b>Server</b>	Hedsam X or Novitas server IP address.
<b>Gateway</b>	Network gateway address.

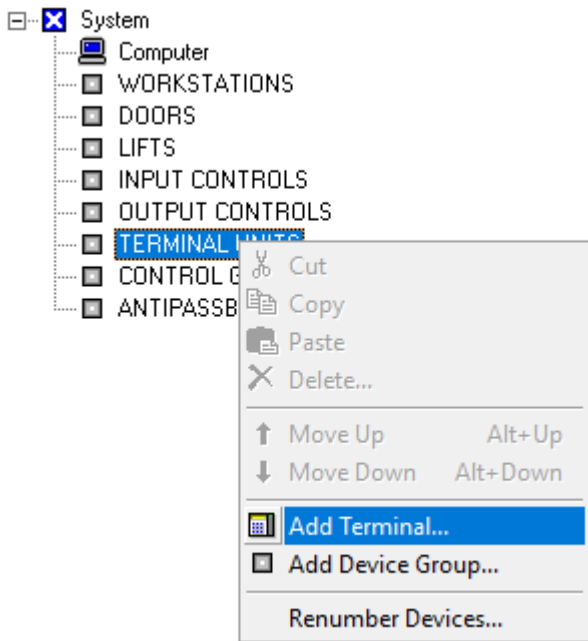
On Miscellaneous settings System ID, Terminal Id and Terminal Type are concerned only when terminal is applied to Hedsam Novitas system. In this case CC-Cluster is mandatory.

<b>System Id</b>	CC-Cluster ID which has the virtual Terminal programmed.
<b>Terminal Id</b>	(Hedsam address).(Terminal address) Example 1.1, which means Hedsam address 1 that has Terminal address 1
<b>Terminal Type</b>	Attendance or Meal. Default: Attendance

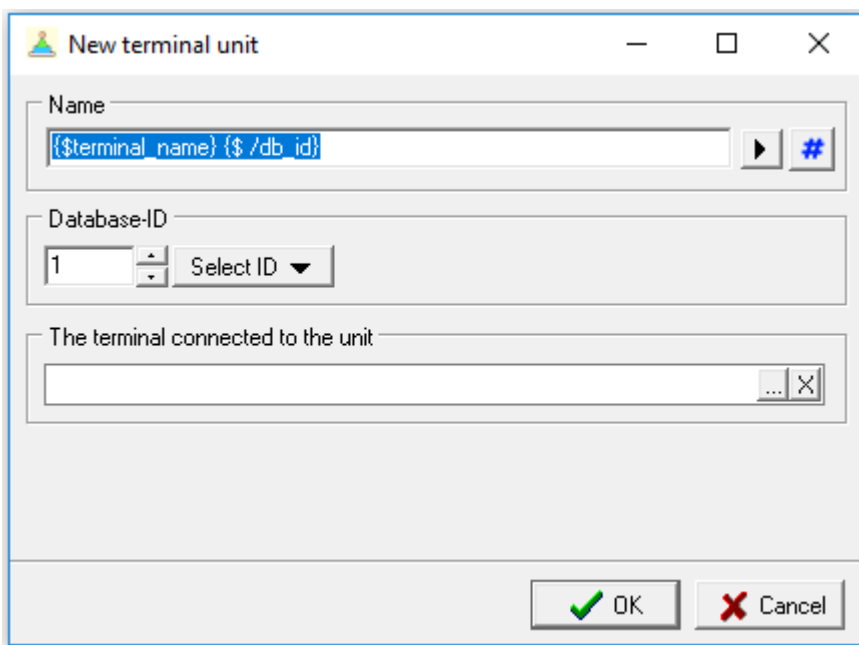
4. Press  Terminal will reboot and start up with the new IP settings.

## HConfig:

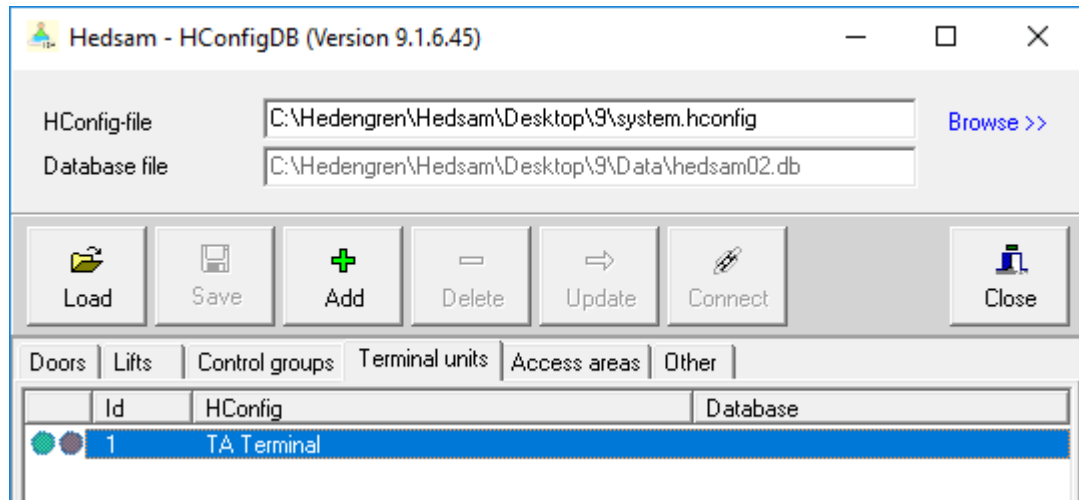
1. Add new Terminal to configuration.



2. Give Terminal a name.
3. Database-ID is needed on TAXConnect.ini as value of database-id
4. Don't select "The terminal connected to unit". Just give name and click OK



5. Save configuration and add the Terminal also to database with HConfig DB.
  - Select Terminal units tab
  - Select Terminal from the list
  - Select Add
  - Select Save



#### TAXConnect.ini:

These settings effects TAXConnect program and TAXConnect service.

```
[common]
AutoConnect=1
LocalPort=50000
PrintPerson=1
PrintCodes=0
PrintData=0

[terminals]
//
// database-id, terminal-type, reader-type, language, terminal-ip
//
// database-id: konfiguraatiossa määritellyn päätteen tietokanta-id
// terminal-type: päätteen tyyppi TA | LUNCH
// reader-type: lukupään tyyppi RAW | HEDEN2L
// kieli: FI | SE | EN
// terminal-ip: päätteen ip-osoite
//
1, TA, HEDEN2L, FI, 192.168.0.101
```

In [common] section are settings for communication and debug level what to show in TAXConnect program.

In [terminals] section you define:

<b>Database-id</b>	Id that is given for terminal in HConfig program
<b>Terminal-type</b>	TA or LUNCH
<b>Reader-type</b>	RAW for Mifare or any other format than HEDEN2L. HEDEN2L is for credentials that are from Hedengren and are in facility.card-number format (SEOS included).
<b>Language</b>	FI for finnish, SE for Swedish and EN for English
<b>Terminal-ip</b>	IP Address of the terminal

### **TAXConnect and TAXConnectServ**

These programs are used for communication between Terminal and Hedsam X or Novitas Server. TAXConnect is Windows program and TAXConnectServ is Windows service (these can't be used at a same time). Program and Service will be listening UDP port and will communicate with terminal IP addresses which are programmed in TAXConnect.ini.

It is better to start usage with TAXConnect instead of TAXConnectServ. With application you can verify that communication between server and TA X Terminal is working.